



Browsers that can not handle javascript will not be able to access some features of this site.



OFFICIAL WEBSITE OF MICHIGAN.GOV

Coronavirus



Questions About COVID-19?

Visit our [Frequently Asked Questions](#) page

Our most commonly answered questions can be found there, and are updated often.

Call the COVID-19 Hotline at 888-535-6136.

Email COVID19@michigan.gov.

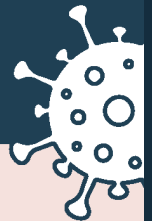
NEW: MDHHS EPIDEMIC ORDERS

LEARN ABOUT THE NOVEMBER 18 EPIDEMIC ORDER



COVID-19

PAUSE TO SAVE LIVES



Open



Two-household gathering
(high precautions)*



Small outdoor gatherings
(25 people)



Retail



Preschool through 8th grade
(local district choice)



Childcare



Manufacturing, construction,
other work that is impossible
to do remotely



Public transit



Hair salons, barber shops,
other personal services



Gyms and pools
(for individual exercise)



Restaurants and bars (outdoor
dining, takeout, and delivery)



Professional sports**
(without spectators)



Parks and outdoor
recreation



Funerals
(25 people)



Health care

*See Social Gathering Guidance.

**Includes a limited number of NCAA sports.

Not open



High schools
(in-person learning)



Theaters, movie theaters,
stadiums, arenas



Colleges and universities
(in-person learning)



Bowling centers, ice skating
rinks, indoor water parks



Workplaces, when work can
be done from home



Bingo halls, casinos,
arcades



Restaurants and bars
(indoor dining)



Group fitness classes



Organized sports, except
professional sports

For more information about the order, visit [Michigan.gov/Coronavirus](https://michigan.gov/Coronavirus).
Questions or concerns can be emailed to COVID19@michigan.gov.



Protect yourself and your community



MI COVID ALERT

Protect yourself and your community by stopping the spread of COVID-19. Download the app and get notifications if you may have been exposed to the virus.

[GET THE APP](#)

[DON'T BRING COVID HOME. GET TESTED.](#)

[FIND A TEST SITE](#)

SPREAD HOPE, NOT COVID

Learn how masks reduce the spread and can help safely reopen Michigan.

[MORE INFORMATION](#)



MI SAFE START

All Regions of Michigan are in Mi Safe Start Reopening Phase 4

The MI Safe Start Plan outlines how we are re-engaging the economy while keeping our communities safe.

[MI SAFE SCHOOLS ROADMAP 🇺🇸](#)

[MI SAFE START SITE](#)

[MI SAFE START PUBLIC GUIDANCE](#)

[MI SAFE START MAP DASHBOARD](#)

FREQUENTLY ASKED COVID-19 QUESTIONS

[About COVID-19, Symptoms & Testing](#)

[Employees](#)

[Employers](#)

[Executive Orders & Executive Directives](#)

[Outdoor Recreation](#)

[Schools & Universities](#)

OTHER COMMONLY ASKED COVID-19 QUESTIONS



LATEST MICHIGAN NEWS

MDHHS and Liquor Control Commission issue citations, suspend liquor licenses for not following public health order to contain spread of COVID-19

Most establishments across the state are doing their part by following the order

MDHHS adds new data to website with lab turnaround times; announces holiday data schedule

Michigan's older adults can connect virtually with family and friends this holiday season

MORE CORONAVIRUS NEWS

WHERE WE STAND WITH COVID-19

The State of Michigan is working around the clock to test and treat COVID-19 patients. Below is the most recent data healthcare experts across the state have compiled. It is updated Monday - Saturday.

Total Confirmed Cases

324,779

Total COVID-19 Deaths

8,761

Daily Confirmed Cases

4,273

Daily COVID-19 Deaths

73

11/25/2020

[SEE CUMULATIVE DATA](#)

RESOURCES AND ASSISTANCE

Emergency Assistance

Apply for energy, health insurance, food & other assistance through MIBridges

Unemployment Assistance

Apply for unemployment assistance through the Michigan Unemployment Insurance Agency

Business Assistance

Find COVID-19 Workplace Safety Guidance

GET THE LATEST FROM THE CDC

The United States Center for Disease Control and Prevention has more information at a federal level about COVID-19 and our current pandemic. Click the link below to access the federal government's information and resources.

[VISIT CDC.GOV](https://www.cdc.gov)



[MICHIGAN.GOV HOME](#)

[ADA](#)

[MICHIGAN NEWS](#)

[POLICIES](#)

COPYRIGHT 2020 STATE OF MICHIGAN